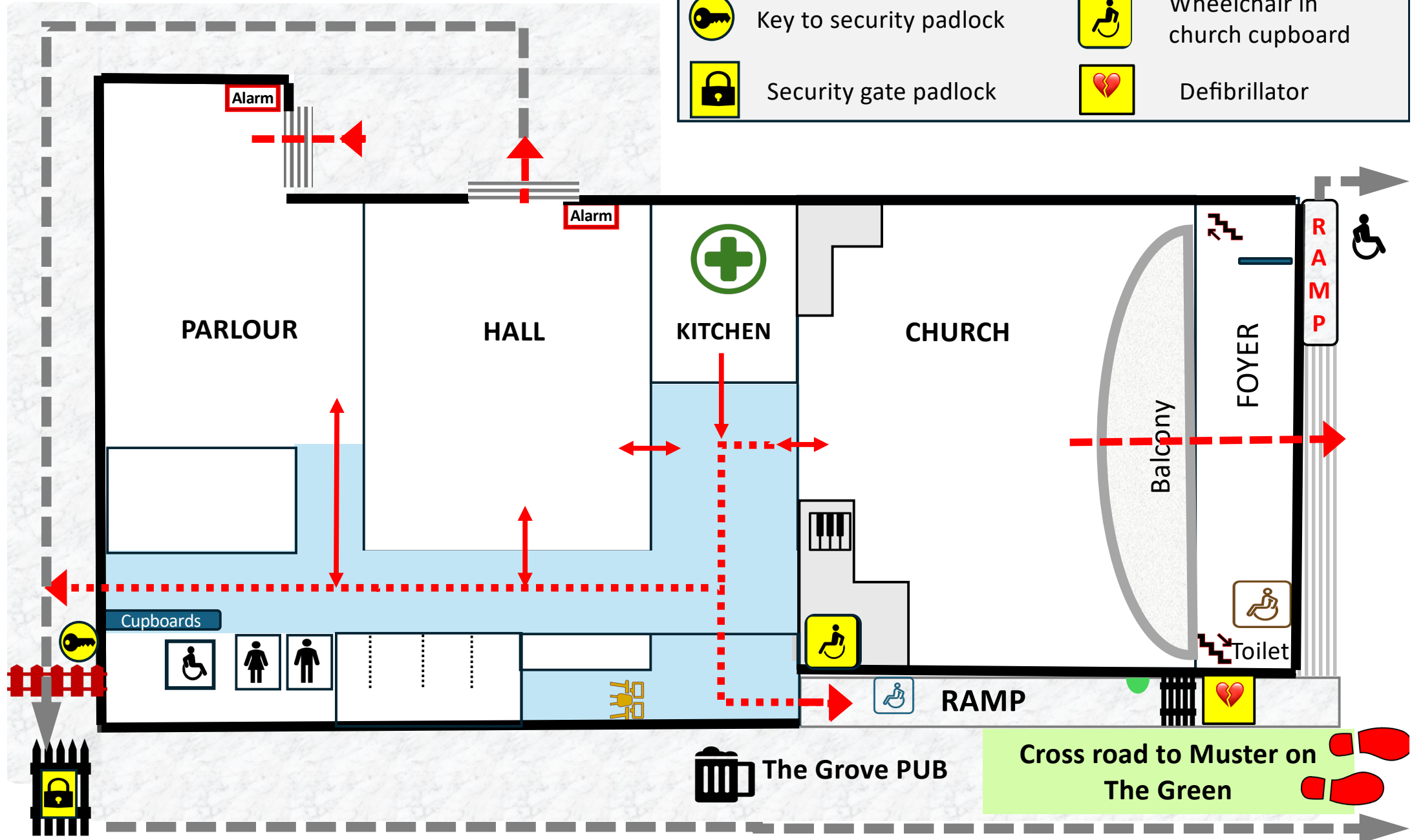
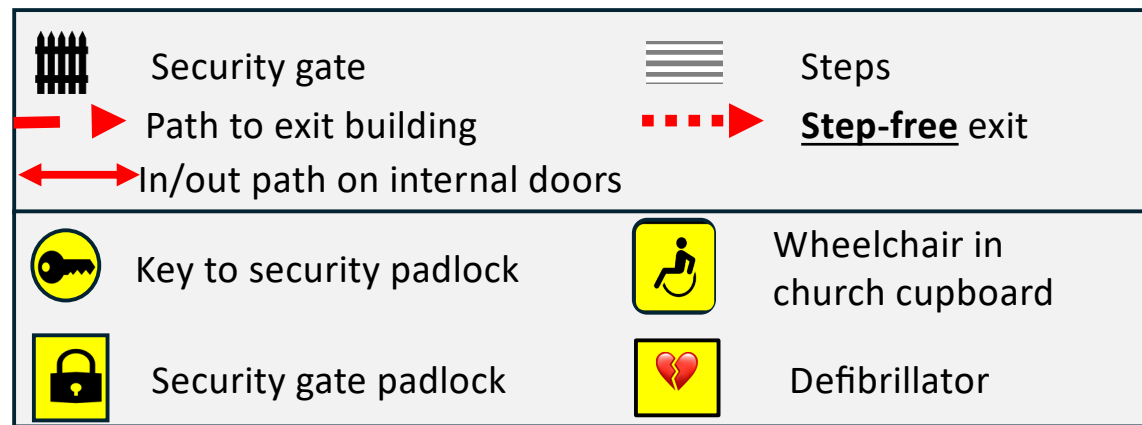


EGC Member Floorplan Exits



Emergency Evacuation Procedures

• If an alarm is set off

- If safe, sit down for verbal instructions. We will direct the section nearest the point of alarm, as assessed by the firemarshal/s.
- We share the building with others and set out the chairs with a central walkway to ensure exit across the Church is possible.
- We have several rows of singers and do not want people to trip over bags or chairs – or each other.

In the event of a fire-alarm or other need to evacuate


One or two firemarshals will be at rehearsal, wearing hi-vis vests. The muster point is across the road on the Green on the road opposite, where we can assemble to check the register and that all are out safely.

We will exit rear rows first, depending on safe exit.

- *Alarm inside the building - Exit through the foyer*
- The Church space has an exit to the front & down ramp or stairs.
- *Alarm in the foyer - Exit via side or rear of building*

the exit is to the interior corridors, where there is a step-free exit to the side-door to the front or to the rear of the building down the corridor past the toilets.

If you see a fire ? Raise the Alarm

- Priority is evacuation rather than fire-fighting.
- Fireblanket and First Aid box in kitchen. 
- Phone 999



Mobility Issues ?

- If you have mobility issues, **please seat yourself in the front row of your vocal section.**
- People with walking aids or mobility issues ideally sit in row closest to MD and last out.
- We have **mobility buddies** from the Committee to assist exit.
- We have one foldable wheelchair in Church cupboard (organ side) and step free exit paths
- **There is a ramp down from the front doors if that exit can be used.**

Step-free exit to rear

- Go down the corridor past toilets and the ECS cupboards.
- Exit through wooden gate.
- There is a key to the security gate padlock in a round container by the door.
- Exit via Holinser terrace.
- Go round past The Grove pub and cross the road when safe, to muster point on the Green where we will take the register when all are assembled.
- **Fire marshal takes key & padlocks after all out**
- Defibrillator is outside Church on wall by security gate.